



**HawaCom**  
Empowering Progress with Pure Air Precision



**Shenzhen**

**HawaCom**

**Industrial Co., Ltd**



202, BUILDING C, NO. 57 ANHUA ROAD  
YUANSAN STREET, LONGGANG DIST.  
SHENZHEN CITY, GUANGDONG, CHINA



+86 158 18566660



info@hawacom.cn



# COMPONENTS

Assembled with genuine air end and imported spare parts, HawaCom compressors have more stable performance and generate greater air output, which is unrivaled in the same industry in China0.

Danfoss

SIEMENS

ABB

Donaldson

MANN  
FILTER

SKF

optibelt

WEG

ZOOA

DOLONG

AERZEN

GHH RAND

Inovance

ODE

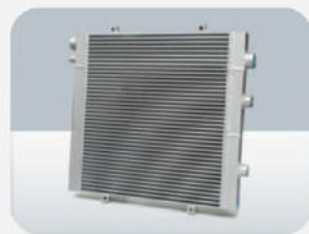


## ■ Superior Air Inlet and Filter System

Customized air filter with two stage dust removal and filtering system, up to 99.9% efficiency even in heavy-duty environment.

Inlet air filter is designed to suck outside normal temperature air, to make the output temperature significantly decreasing by 3-10°C and greatly extended the service life.

Germany MANN oil filter with excellent oil purification efficiency, to ensure the safety oil system, and enlarge the service life.



## ■ Energy Efficient Cooling Method

High quality of aluminum fins and copper coil materials with good thermal conductivity to ensure the perfect cooling efficiency.

The cooler is located separately from the internal chassis with higher temperature, so that the cooling fans would suck air with normal temperature from outside, to save over 30% energy and make the output air temperature decrease 3~8°C.

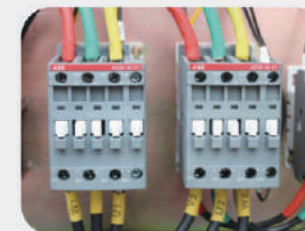


## ■ Optimum System Design

The technicians optimize the system to largely reduce errors during running, to make the air delivery more sufficient and make the energy consumption advanced in compressed industry.

Reduce pressure drops and save energy. Three step air-oil separation (centrifuge, gravity, filter).

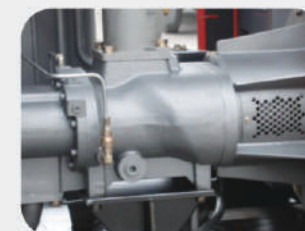
Quality air with low oil content less than 3ppm.



## ■ Intelligent Control

ABB electrical elements bring you the resulting sense of reliability and convenience during operation.

Reasonable, simple and clear wiring with clear diagram, easy for maintenance.



## ■ Good Sealing Performance

Good sealing performance has been an objective we pursue immutably. Unique process design and material application free you from the headaches of common faults in air compressors such as oil leakage, air leakage, etc.

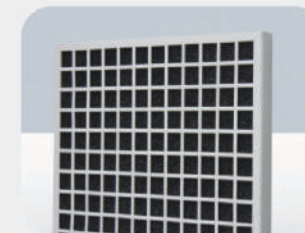


## ■ PLC

Touch screen with multiple languages for choose.

Full protect functions for motor and compressors.

Remote control with RS485 available. Ingersoll-rand supplier CMC for choose, with advanced ECO card & IOT functions.



## ■ Dust Screen

Stop most of the dust, oil, moisture, etc, to increase service life of air end, air filter and oil filter.



## ■ Air Inlet Valve

High-quality air inlet valves with 0-100% stepless adjustment to the air quantity inlet, to reduce the energy consumption.

Integrated check valve to prevent backflow of air and oil in case of unexpected power failure.



## ■ Genuine Air End

Advanced ELANG air end with larger air delivery and stable running conditions.

Germany Aerzen and GHH for choose



## ■ Genuine Imported Bearing

Excellent imported bearings are adopted for compressor air end to better improve their use efficiency, reduce abrasion and help to make the engagement more stable and smooth.



## ■ Solenoid Valve

Original Italy ODE ensure the stable running of compressors.

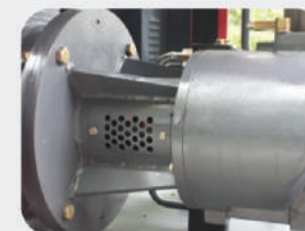


## ■ High Efficiency Motor

High efficiency totally enclosed fan cooled motor with protection class IP54/IP55 and insulation class F.

Standard ELANG motor, the same motor supplier of Atlas Copco and Ingersoll-rand in China.

ABB / Siemens / Weg motor for choose.

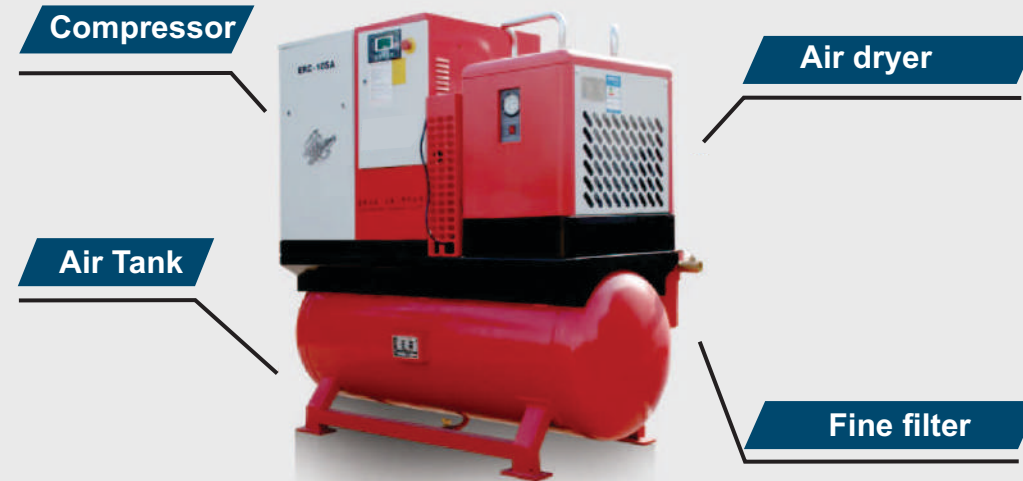


## ■ Energy Saving 1:1 Direct Driven Design

Original maintenance-free coupling makes the motor drive air end without transmission loss.



# COMBINED SCREW COMPRESSOR



## Combined Screw Air Compressor Series

The combined screw air compressor integrates the parts including screw compressor, air dryer, fine filter and air tank, making it convenient for the user to install, use and move.

After the air pass the integrated system, the quality of air is made largely better to satisfy process requirements of various companies. It has beautiful appearance, stable performance and economic installation. It is one of the important series exported by our company.



## Large Integrated Screw Air Compressor

Large integrated screw air compressor is a kind of compressor integrated with compressor, air tank, refrigerated air dryer (adsorption air dryer) and precision filters, that greatly make convenience for customers to do installation and can be freely moved to anywhere with flexible operation. After placed on level ground, it can put into use after use connecting through power supply and gas pipelines, which save many processes that have to install and connect amounts of pipelines and valves. With reliable performance and easy management, its economic is far better than that of separated unit series. Now many medium and middle mining industries prefer this integrated series.



## SPECIFICATIONS

Motor Efficiency Class: IE4/IE3/IE2 as per your required  
Type of Driving: Belt driven

Motor Protection Class: IP23/IP54/IP55 or as per your required  
Type of Cooling: Air Cooling/Water Cooling

### COMPACT MASTER SERIES (Compressor+Tank+Dryer+Filters)

Model	Compressor				Tank	Air dryer		Filter	Dimension(mm)			Weight		
	Working Pressure	Air Delivery	Motor Power	Output Pipe Diameter	Volume Receiver	Model of Dryer	Treatment Capacity	model of Precision Filter						
	psi(g)	bar(g)	cfmm /min			m³		m³/min		L	W	H	Kg	
CM-10TD	100	7	38.8	1.1	7.5/10	3/4"	0.3	ELH-10A	1.2	END012	1650	730	1530	680
	116	8	35.3	1.0										
	145	10	30.0	0.85										
	181	12.5	24.7	0.7										
CM-15TD	100	7	63.6	1.8	11/15	1"	0.5	ELH-15A	2.4	END024	1955	800	1800	785
	116	8	58.3	1.65										
	145	10	53.0	1.5										
	181	12.5	45.9	1.3										
CM-20TD	100	7	84.7	2.4	15/20	1"	0.5	ELH-20A	2.6	END024	1955	800	1800	810
	116	8	77.7	2.2										
	145	10	74.2	2.1										
	181	12.5	63.6	1.8										
CM-25TD	100	7	109.5	3.1	18.5/25	1"	0.5	ELH-30A	3.8	END035	1900	1070	2012	910
	116	8	102.4	2.9										
	145	10	95.4	2.7										
	181	12.5	81.2	2.3										
CM-30TD	100	7	134.2	3.8	22/30	1 1/2"	0.5	ELH-30A	3.8	END035	1960	1070	2012	930
	116	8	127.1	3.6										
	145	10	113	3.2										
	181	12.5	88.3	2.5										

### COMPACT MASTER SERIES (Compressor+Tank)

Model	Compressor					Tank	Dimension(mm)			Weight	
	Working Pressure		Air Delivery		Motor Power	Output pipe Diameter					Volume of Receiver
	psig	bar	cfm	m³/min	kw/hp		³	L	W	H	Kg
CM-10T	100	7	38.8	1.1	7.5/10	3/4"	0.3	1650	730	1530	680
	116	8	35.3	1.0							
	145	10	30.0	0.85							
	181	12.5	24.7	0.7							
CM-15T	100	7	63.6	1.8	11/15	1"	0.3	1955	800	1800	785
	116	8	58.3	1.65							
	145	10	53.0	1.5							
	181	12.5	45.9	1.3							
CM-20T	100	7	84.7	2.4	15/20	1"	0.3	1955	800	1800	810
	116	8	77.7	2.2							
	145	10	74.2	2.1							
	181	12.5	63.6	1.8							
CM-25T	100	7	109.5	3.1	18.5/25	1"	0.5	1900	1070	2012	910
	116	8	102.4	2.9							
	145	10	95.4	2.7							
	181	12.5	81.2	2.3							
CM-30T	100	7	134.2	3.8	22/30	1 1/2"	0.5	1960	1070	2012	930
	116	8	127.1	3.6							
	145	10	113	3.2							
	181	12.5	88.3	2.5							

Certification: CE/ISO9001/TUV/UL/SGS/ASME